



Visitor's Guide to Kentucky Shakespeare Festival in Central Park - Louisville, KY



**Welcome to Free Shakespeare in the Park!
We're located at Central Park - 1340 South 4th
Street in Historic Old Louisville, KY.**



Central Park is like most parks - there are trees, benches, playground equipment, and tennis courts. You may hear animals, sirens, airplanes, traffic, bugs, music, people talking, and children playing.

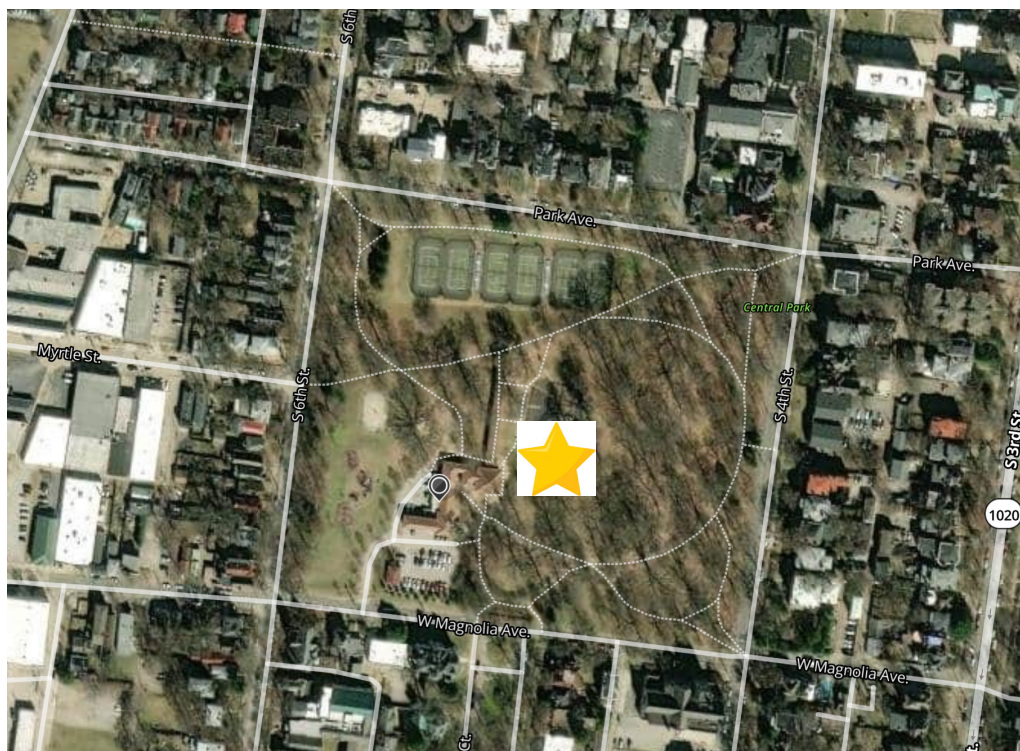
What makes this park special is that there is also a theater there - outside. It is completely free and you do not need a ticket to attend.



This is called an amphitheater where the seats, stage, and performance happen outside.

You can visit here to watch a theatre performance with Kentucky Shakespeare.

When you arrive, you can park along the streets around the park. There are many different walking paths to get to the center of the park where the stage is.



When you get to the amphitheater, there are different areas to visit and activities to do before the performance begins.



There are food trucks at the top of the hill where you can buy something to eat or drink. Payments accepted include cash, credit, or debit cards. You may have to wait in line to place your order and wait for your food to be prepared. They open at 6pm and you can find the schedule at kyshakespeare.com/events.

If you want to visit the restrooms, then they are on either side of the Visitors Center. This is the building at the top of the amphitheater.



There are multiple stalls available in each restroom but there may be lines especially during intermission.

**You may want to visit the Gift Shop or other informational booths along the pathway.
The gift shop opens at 7pm.**



You can buy t-shirts or merchandise, borrow noise-cancelling headphones, pick up a large print program, request a Sensory Guide to know when loud noises or big events happen in the performance, or ask for a Sensory Tool for the performance.

As you head towards the seating area, you may see people in Purple Shirts or with Volunteer Badges. They are there to offer you programs, answer any questions that you may have, or help you to select a seat.



You can travel down the stairs or the flat concrete aisles. Everyone is free to choose any open bench that they would like, sit at picnic tables, or bring their own chairs or blankets. There will be plenty of space to spread out.

There are some important things to note about the amphitheater for your visit with us.

- **The first and last couple of rows are left open for people who would like to bring their own chairs.**
- **Please note that smoking is not permitting in the amphitheater but is outside of the ropes.**
- **Pets are welcome! We just ask that you keep your pet on leash, clean up after it, and sit at the picnic tables or along the grass.**
- **You will find an optional audience survey in the program. Return your filled out card to a staff member or to the Gift Shop and you will be entered into a drawing for a free gift that is announced at the end of intermission!**



For our young guests, you can visit the Kids' Globe tent to learn more about the performance, do some arts and crafts, or participate in a demonstration like dancing or stage combat.



It is a big blue tent where Artists will be there to help you from 7-8pm.

Kentucky Shakespeare schedules community pre-show performances which begin at 7:15pm.



These may feature singing, dancing, music, or short performances that last until 7:45pm.

**The main performance begins at 8pm.
When the performance starts,
the sun will still be shining for a while.**



**As the performance continues on, the stage
lights will gradually turn on as it gets dark.
It will never be completely dark as there are
lights in the park too.**

If you need to get up at all during the performance, then try to use the nearest aisle to get to the top of the amphitheater.



During the performance, actors may be walking up and down the aisles as well as other audience members so always be sure to look both ways before you enter the aisle.

A bell will ring a few minutes before the beginning of the performance and a few minutes before the end of intermission. This means there's only a couple of minutes left before the performance will begin.



Performances may have music, loud sound effects, and actors on microphone. People may clap at times such as during the intermission or at the end of the performance. You can learn more about specifics for sound in the Sensory Guide.

**There will be a 15-minute intermission.
At this time, you are welcome to get up, walk
around, and visit the Gift Shop, Food Trucks,
or Will's Tavern!**



**Actors will be “barreling” or collecting cash
donations onstage with brightly colored bags.
If you would rather pay with a credit/debit card,
then a staff member in a Purple Shirt will be
present at the top of the amphitheater with a
card reader. Or you can Venmo @KYShakes!**

At the end of the show, there will be applause and many people will stand up as the actors bow. Once the actors have taken their bows, the show is over and you are free to leave!



All of the lights will come on as you leave. You can exit the park the same way that you came in. It will be very dark but the pathways are lit. It's always a good idea to leave the park with another person. Kentucky Shakespeare will have staff members available to assist.

As a reminder before you visit, you may want to visit our website to check the following details:

- **Dates of Performances**
- **Opening and Starting Times**
- **When ASL Interpreted Performances Occur**
- **A Way to Contact Us About Accessibility Needs Before Your Visit**
- **Schedules for Food Trucks, Community Pre-Shows, and Late Night Performances from our Community Partners**

**Website: kyshakespeare.com/season/sicp/
To Email Us: info@kyshakespeare.com**

Thank you for visiting Kentucky Shakespeare!

