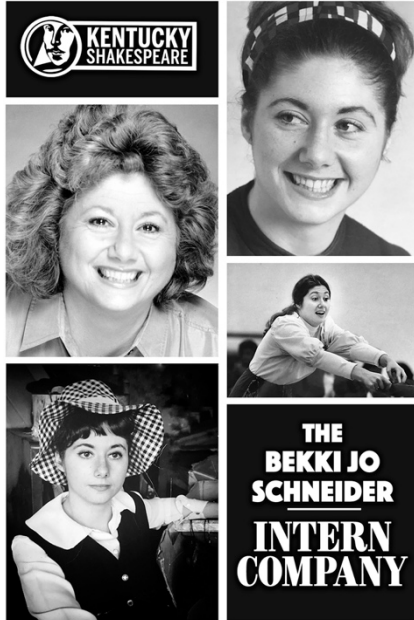


2021 SEASON



Kentucky Shakespeare has postponed our originally-planned 2020 slate of in-person productions until summer 2021 with the same artistic, design, and production team, as availability allows.

Kentucky Shakespeare Festival plans to return with in-person programming in Central Park May 26-August 8, 2021 – with *Shakespeare in Love* presented by Churchill Downs, *Henry V*, and *The Merry Wives of Windsor*, plus *A Midsummer Night's Dream* from our Globe Players professional training program for high school students plus guest productions from Louisville Ballet and Louisville Improvisors.

13-15 paid interns will be hired for the 2021 Bekki Jo Schneider Intern Company.

Kentucky Shakespeare's summer intern program extends the education portion of our mission into the summer performance season. The intern company is composed of college students and early career professionals who gain practical experience alongside professional artists and theatre-makers. Interns are an integral part of the Kentucky Shakespeare Festival.

The intern company experience includes mentorship within the company and conversations with local professionals in various fields, under the direction of Associate Artistic Director Amy Attaway.

Interns are provided a weekly stipend of \$150 and are responsible for their own housing. Interns will work 6 days a week, including nights and weekends.

Each intern will spend the majority of their time working within their department, but the whole intern company is expected to participate in load-in, changeovers, and strike. Interns also might be asked to interact with the audience as strolling costumed performers before performances. We look for candidates with some training in their field, ability to multi-task, eagerness to learn, desire for challenge, and the ability to maintain good humor and patience in the delightful heat of Kentucky summers.

Kentucky Shakespeare is committed to maintaining a diverse and inclusive environment, and welcomes applicants for all positions without regard for race, color, religion, gender, gender identity or expression, familial status, sexual orientation, national origin, ability, age, or veteran status.

ACTING

Acting interns audition with the other actors for the season and are hired based on casting needs. These interns have full access to the training opportunities and will be asked to participate in some technical work, including changeovers.

ADMINISTRATION

The Administration intern works directly with the Director of Operations & Marketing on managing the data entry and organization involved in mounting the 11-week summer season. Duties may include some public relations work, including social media and distributing marketing materials. The Administration intern will participate in load-in and strike with the Front of House staff and may be asked to perform production duties as needed, including changeovers.

COSTUMES/WARDROBE

The costumes intern spends the majority of the summer working alongside the professional stitcher/drapers in the shop. The intern will also act as assistant to the wardrobe supervisor once the shows open. The costumes intern will participate in load-in, changeovers, and strike.

ELECTRICS

The electrics intern spends the first several weeks of the contract on maintenance, hang, and focus in our storage warehouse and in the park. The intern will have the opportunity to shadow the Master Electrician and Assistant Master Electrician as the board op for the professional season and have the potential of stepping in as board op for the Globe Players and Louisville Ballet performances. The electrics intern will participate in load-in, changeovers, and strike.

FRONT OF HOUSE

The Front of House intern works with the House Manager and Director of Operations & Marketing. For the first few weeks of the season, this intern will participate in scheduling community pre-show performances, distributing marketing materials, and setting up the audience-related areas of the park. When the shows open, the FOH intern works evenings in the park, distributing playbills and surveys, interacting with audience members and volunteers, and helping maintain the physical atmosphere of the amphitheater.

EDUCATION

The Education intern facilitates and teaches in the Kids' Globe, our interactive educational exhibit at the park. The intern will work with production and education staff to develop activities around each of the mainstage shows, and set up the Kids' Globe tent and supplies before every performance. In addition, the intern will assist the Education Manager with administrative duties for Camp Shakespeare, our summer program for kids ages 4-18. This intern's time is split between the office and the park, and they will participate in load-in, changeovers, and strike.

PRODUCTION

The Production intern works with the Production Manager, Associate Artistic Director, and Director of Operations on scheduling, budget tracking, and communication among the production departments. Duties include everything from attending production meetings and tech rehearsals to hands-on maintenance and supply acquisition for the 11-week summer season. The Production intern will participate in load-in, changeovers, strike, and in various departments as needed throughout the season.

PROPS

The props intern works with the props master for the first six weeks of the season, building and procuring the props for the season. When the shows open, the props intern might transition to run crew on the shows, or other duties as needed. The props intern will maintain and care for the props as they are used throughout the summer. The props intern will participate in load-in, changeovers, and strike.

SETS

The sets intern works with the technical director and other scene shop staff for the first few weeks of the season, building and installing the scenery for the summer. When the shows open, the sets intern will be in the park every night, either as run crew or deck carpenter, as needed. The sets intern will participate in every load-in, changeover, and strike.

SOUND

The sound intern spends the first several weeks of the contract on maintenance, and installing equipment at our performance space. For the majority of the performance season, the sound intern serves as A2, maintaining mics and working with the actors during the performances. The intern will have the opportunity to shadow the Sound Engineer as the board op for the professional season and have the potential of stepping in as board op for the Globe Players and Louisville Ballet performances. The sound intern will participate in load-in, changeovers, and strike.

STAGE MANAGEMENT

The stage management intern serves as a second ASM for the whole season, working alongside our professional stage managers in every aspect of the productions. Like all stage management positions, the position requires daytime and evening work. The SM intern will spend many hours in the park as well as maintaining paperwork and sitting on book during rehearsals. At the end of the season, there is the opportunity for the SM intern to take a more leading SM role in either the Globe Players or Ballet performances. The stage management intern will participate in every load-in, changeover, and strike.